

WLA HEALTH AND EMPLOYMENT PROGRAMME

**West London Economic Prosperity Board
February 2022**

Health and Employment Programme Overview

The Health and Employment Programme

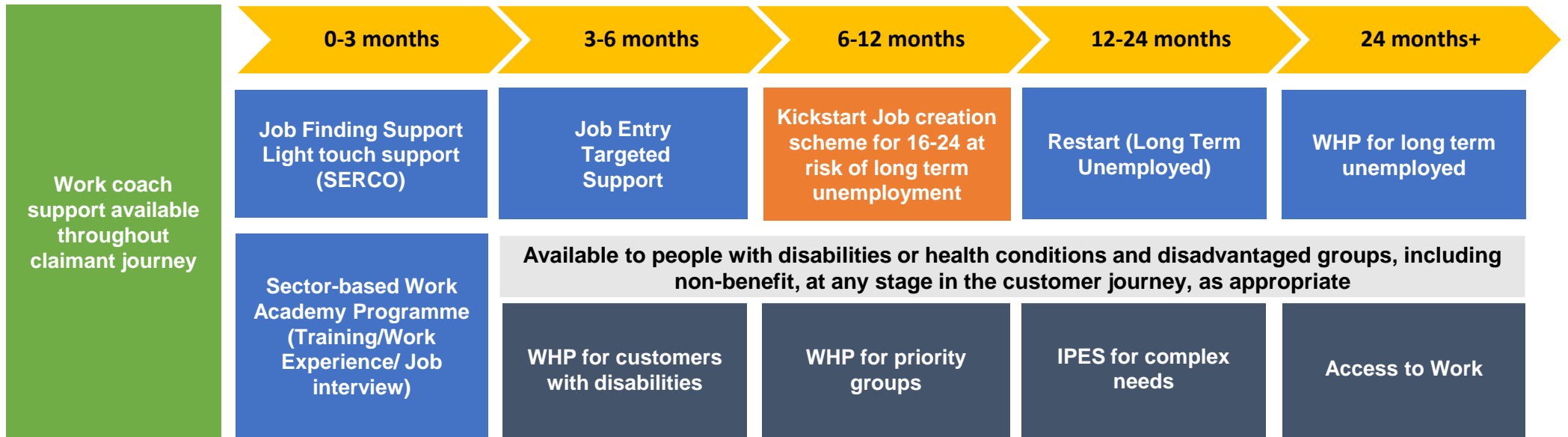
- The Health and Employment Programme provides high quality support to unemployed people in West London who have additional barriers to getting into work.
- The Health and Employment Programme has five discrete workstreams:
 - Work and Health Programme (WHP)
 - Job Entry Targeted Support (JETS)
 - Individual Placement Support (IPS) for Common Mental Illness (CMI)
 - IPS for Drug and Alcohol Service Users
 - WLA Borough Employment Brokerage Expansion
- Despite the economic fallout in West London from the Covid 19 Pandemic, taken together with the 70,000 places on the Restart Programme and Kickstart, contracted by DWP, we have sufficient high quality employment support places available for the additional unemployed people in West London
- The challenges are:
 - to increase awareness and get the right people to the right provision
 - to spot and manage gaps in specialist provision

WLA Programme Timeline

Service	2017/2018	2018/2019	2019/2020	2020/2021	2021/2022	2022/2023	2023/2024	2024/2025	2025/2026	2026/2027
Care Leavers		Start Aug 2017	1 Year extension	Mainstreamed in Brent and Hounslow + Catch 22 GLA provision from 2021						
IPS Service for CMI	Start April 2017			Extended to Dec 2020	Big Lottery extended to Aug 2023		TBC			
WHP (Core) - Referral Window	Initial Referral Window Mar 2018 to Oct 2023 -13,000 places						2 year extension TBC			
WHP post-Referral Window Provision							Last referral can achieve outcome for 21 months		2 year extension TBC	
IPS for D&A				Jan 2019 to June 22 – 1200 places				TBC NHS / PHE Mainstreaming Service		
JETS Referral Window				Year 1 - 9,000 places	Year 2- 9,000 places	No plans for mainstreaming funding				
Post-Referral Window Provision					Run-off	Run Off				
Job Brokerage Expansion					3,200 places					

All Provision in West London

In Addition to the Provision Directly Commissioned by WLA there is a large amount of other support



Information on all of the above programmes can be found here:

[Plan for Jobs: skills, employment and support programmes for jobseekers - GOV.UK \(www.gov.uk\)](https://www.gov.uk/government/consultations/plan-for-jobs-skills-employment-and-support-programmes-for-jobseekers)

- Where gaps in provision exist, Community Budgets, Barrier Funding and Local Commissioning can be used to fill these gaps.

- There are other offers across government e.g.: Apprenticeships, AEB, NCS, etc that help improve people's employability

- Universal Programmes
- Youth Specific Programmes
- Specialist Support

WHP Core Performance

DWP provided feedback at December Joint Governance Board that WLA was the best performing contract in England and Wales on WHP

Overall performance in a borough correlates strongly with and is almost entirely dependent on, levels of referrals (leading on to participation, starts and outcomes).

Borough	Share of eligible participants	Starts on programme	Percent of starts	First job entry	Percent of first job entry	Job outcomes	Percent of job outcomes
Barnet	15.9%	1,036	14.2%	275	13.1%	135	13.2%
Brent	17.5%	1,055	14.4%	321	15.3%	181	17.7%
Ealing	19.1%	1,207	16.5%	300	14.3%	121	11.8%
H&F	12.4%	650	8.9%	159	7.6%	82	8.0%
Harrow	8.8%	545	7.4%	172	8.2%	83	8.1%
Hillingdon	11.8%	1,109	15.1%	366	17.4%	174	17.0%
Hounslow	14.6%	1,715	23.4%	513	24.4%	251	24.5%
Total		7,321		2,104		1,024	

WLA Borough Employment Support Service ESF Bid

Update on Bid



We submitted a bid for matched ESF funding in June 2021



On 15 October we were informed that we were successful in our bid for £1.4m of ESF funding



The service will work with over 3,200 participants



The aim is to go live by 2 January, but is dependent on getting the grant finalised with GLA EPMU

WLA Plan for Jobs

